

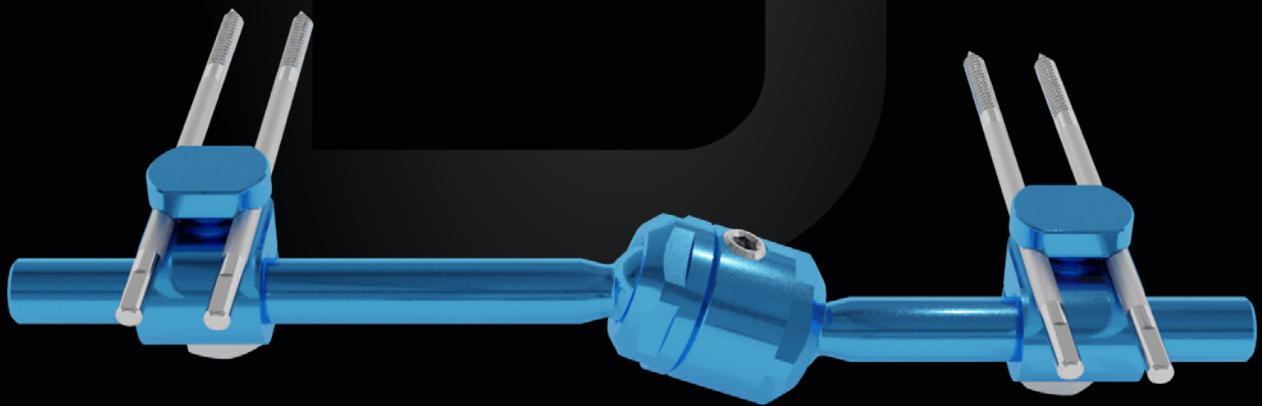
STYLO DIABETIC FOOT

FIXATOR FOR DIABETIC FOOT

Lightweight and durable

Single-use sterile kit

Ball joint



Indications

Stabilisation of the medial column of the first ray after surgical treatment in metatarsophalangeal osteomyelitis and/or deformities secondary to Charcot neuro-osteoarthropathy pattern (1-2 according to the Frykberg Sanders classification).

FEATURES

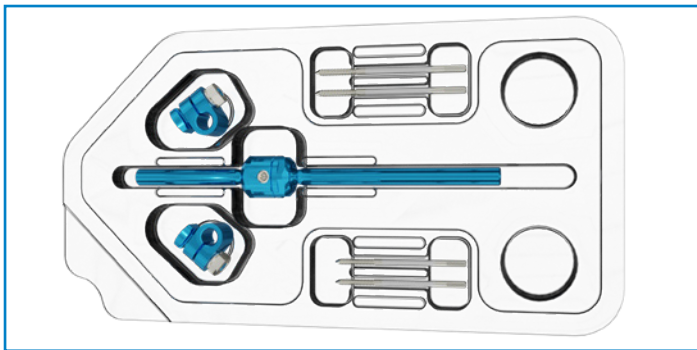
Single-use sterile kit
Modular
Aluminium and steel alloy

ADVANTAGES

Ready to use
Equipped with accessories for various applications
Lightweight

Stylo diabetic foot kit

CODE 5002001ASTA



Description

Qty.

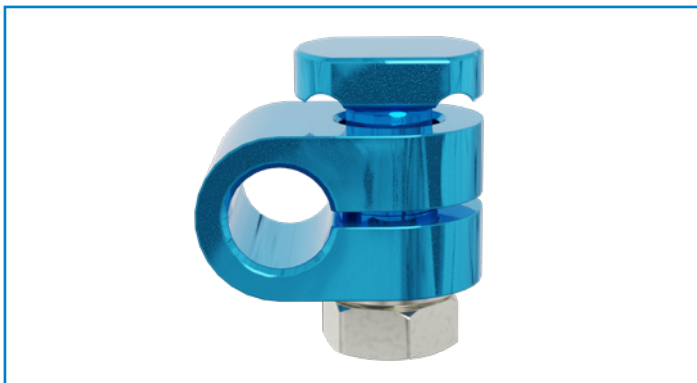
Fixator rod	1
Screw clamp	2
Screws, Ø 3.0 mm L 70 mm	2
Screws, Ø 2.5 mm L 60 mm with Ø 12 mm thread	2

Components



Fixator rod

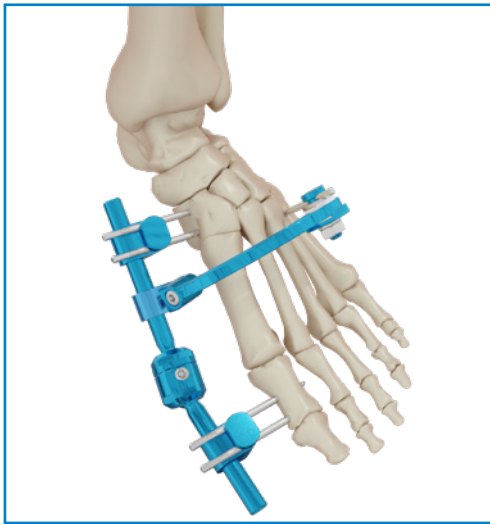
The ball joint facilitates the application and allow movements on all planes.



Double screw clamp

Enables a pair of parallel screws to be applied.
Tightening the nut locks the screws onto the clamp and fastens the clamp onto the rod.

For improved implant stability, additional screws and/or Kirschner wires (1.5 mm to 3.0 mm) can be connected to the fixator rod using accessories.



EXAMPLE OF SYSTEM WITH ARCH

Multiplanar system with 120° arch.

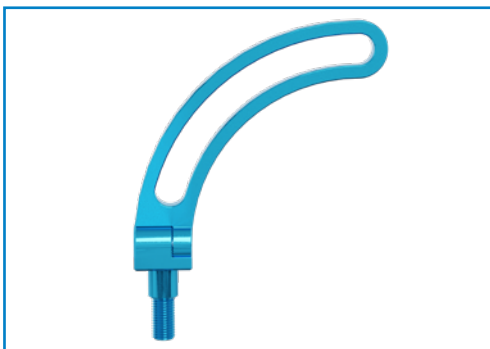
The arch provides improved fixator stability thanks to an additional screw in the IV metatarsal.

Accessories



Single open clamp 5002010AST

It enables the arch to be attached to the fixator rod and/or the stabilisation of an additional bone screw directly onto the fixator rod.



Arch 120° Ø 90 mm 5002016ST

It enables the application of additional bone K-wires and/or screws on different planes for increased stability.



Single clamp for arch 5000004ST

It can be used to stabilise additional screws/K-wires on the arch.

Sterilization

The Stylo Diabetic Foot kit is supplied sterile.

We recommend sterilizing instruments in saturated steam autoclave according to the following parameters:

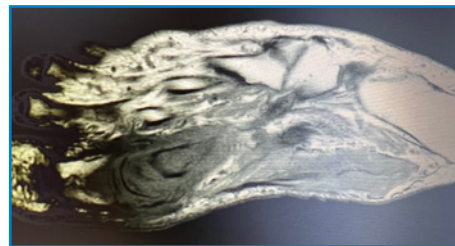
TEMPERATURE: 134°

EXPOSURE: 5 minutes

Clinical case

Prof. Luca Dalla Paola

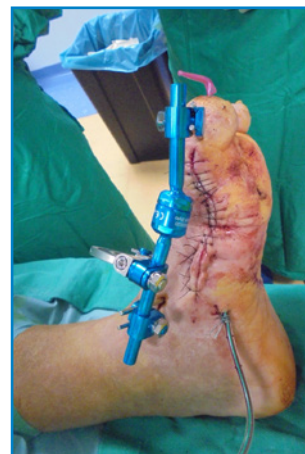
Ferrara University School of Medicine, Diabetic Foot Unit Maria Cecilia Hospital GVM Care & Research



♀ 60 years old
Type 2 Diabetes Mellitus
Large osteo involvement of 1st
MTPJ and 1st metatarsal
MRSA and Proteus



MULTISTAGED APPROACH
1st surgical step
Open large sequestrectomy
and soft tissue surgical debridement
NPWT with antiseptic agent instillation
(super oxidized solution)



MULTISTAGED APPROACH
2nd surgical step (after 5 days)
Surgical debridement
Antibiotic loaded (vanco-genta) PMMA spacer
Stabilization with kw and external fixation

5002001ASTA **STYLO DIABETIC FOOT KIT**

5002001AST **STYLO PLUS DIABETIC FOOT KIT**

Consisting of: a fixator rod, two Stylo clamps, four screws, a 120° arch, an arch clamp and a single open coupling clamp.

COMPONENTS and ACCESSORIES

Code	Description
5002007ST	Extension 40 mm
5002010ST	Stylo single clamp
5002010AST	Stylo single open clamp
5002011ST	Stylo double clamp
5002016ST	Arch 120° Ø 90 mm
5002016CST	Arch 120° Ø 90 mm complete with screw clamp and coupling clamp
5002015ST	Stylo rail coupler
5000004ST	Single clamp for arch
5002401ST	Self-drilling cortical screw, shaft Ø 3.0 mm L 60 mm thread L 20 mm
5002402ST	Self-drilling cortical screw, shaft Ø 3.0 mm L 70 mm thread L 20 mm
5002403ST	Self-drilling cortical screw, shaft Ø 3.0 mm L 80 mm thread L 20 mm
5002404ST	Self-drilling cortical screw, shaft Ø 3.0 mm L 90 mm thread L 20 mm
5002411ST	Self-drilling cortical screw shaft, Ø 3.0 mm L 50 mm thread Ø 2.5 mm L 12 mm
5002412ST	Self-drilling cortical screw shaft, Ø 3.0 mm L 60 mm thread Ø 2.5 mm L 12 mm
5002413ST	Self-drilling cortical screw shaft, Ø 3.0 mm L 70 mm thread Ø 2.5 mm L 12 mm
5002414ST	Self-drilling cortical screw shaft, Ø 3.0 mm L 80 mm thread Ø 2.5 mm L 12 mm
5002431ST	Threaded wire, Ø 1.5 mm L 100 mm thread L 4 mm
	This wire can be used with clamps 5002010ST, 5002010AST, 5002011ST and 5000004ST

INSTRUMENTS *

Code	Description	Qty.
5002297	Stylo Diabetic Foot instrument sterilization case	
Comprising:		
5002056	Screw extension	1
5000130	Guide cannula Ø 3.0 mm	1
5002070	Dual rail cannula, Ø 3.0 mm	1
5000214	T-wrench Ø 10 mm	1
5000124	Hex screwdriver Ø 3.0 mm	1
5000625	T-wrench for 3.0 mm and 5.0 mm hexagonal screws	1
5002290	Empty sterilization case	1

* Implantable and sterile devices are certified by the CE-1936 marking, while non-sterile reusable instruments are certified by the CE marking



HEADQUARTERS

Via P. Gobetti, 56r - 16145 Genova
Tel. +39 010 30801 - Fax +39 010 3080210
www.mikai.it - servizio.clienti@mikai.it

MANUFACTURING FACILITY

Via Canestrello, 2 - 36050 Monteviale (VI)
Tel. +39 0444 950100 - Fax +39 0444 950133
www.mikai.it - servizio.clienti@mikai.it