

CLICKIT CF

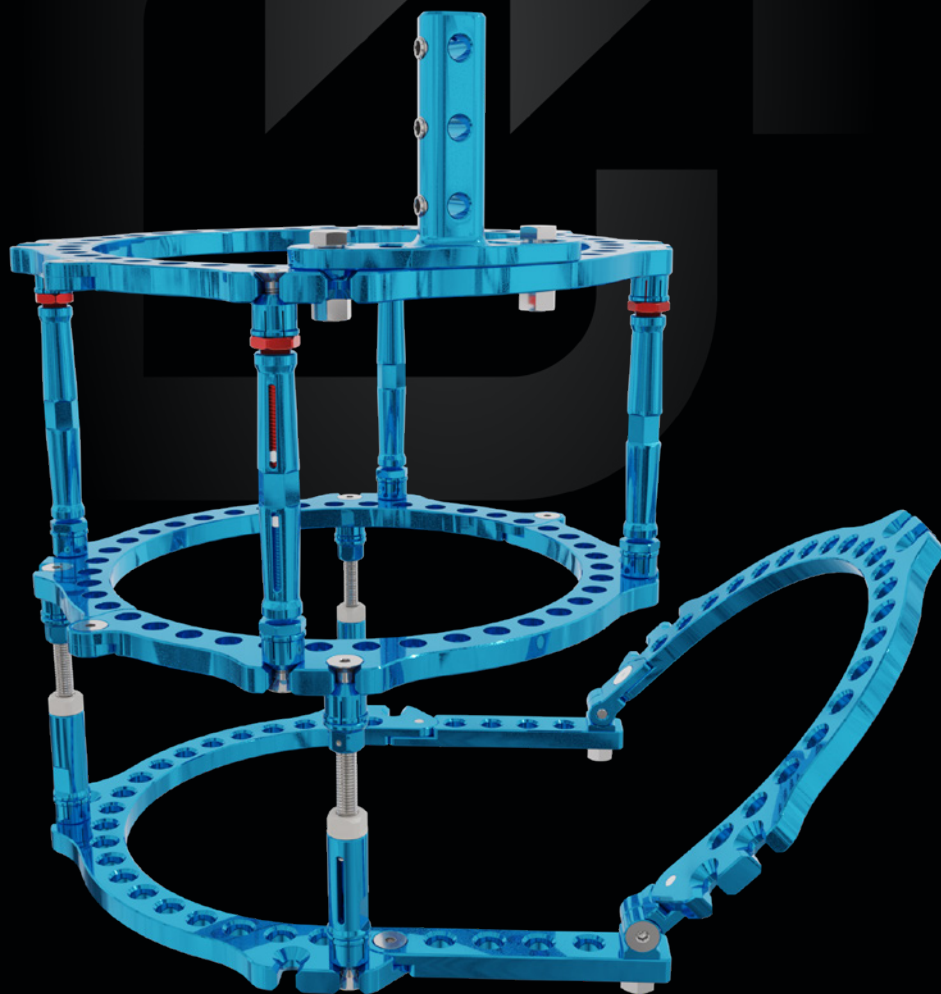
CIRCULAR EXTERNAL FIXATION SYSTEM

Quick connection struts

Stable and lightweight

MRI conditional

Sterile





Indications

Long bone fractures, bone infections, septic and non-septic nonunions, acquired and congenital deformities. Complex fractures affecting joints (knee, ankle) and foot fractures. Diabetic foot.

Applications

Fracture fixation, limb lengthening, deformity correction, ankle and knee arthrodesis.

FEATURES

Sterile
Made of aluminium alloy and stainless steel
Quick connection struts

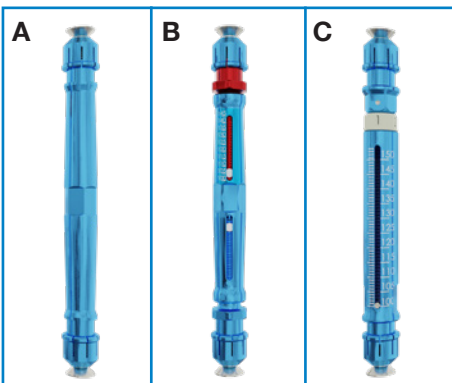
ADVANTAGES

Ready for use
Lightweight, stable and resistant
Easy and quick to assemble

Components



Quick connection struts attach to an external portion of the half rings through a countersunk screw, leaving each ring hole unobstructed and available for surgery. The unique connection between the strut and the ring also ensures partial angular correction.

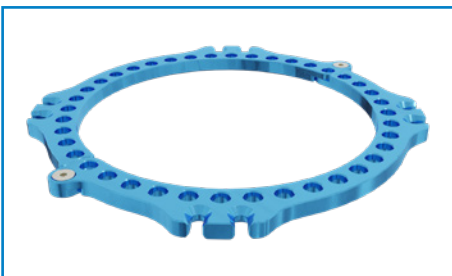


The quick connection struts come in three configurations, all available in different sizes:

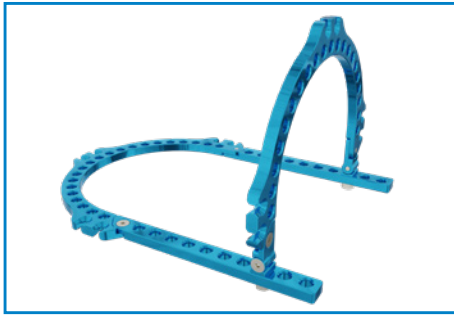
A. Static

B. Telescopic bidirectional: each rotation corresponds to a 2 mm compression/distraction on the graduated scale. This strut is particularly indicated for trauma.

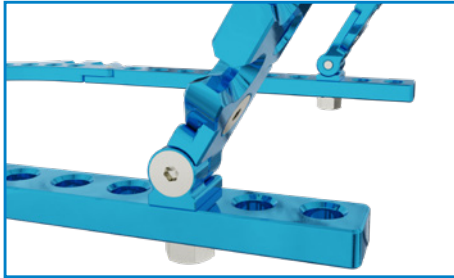
C. Telescopic monodirectional: each rotation corresponds to a 1 mm compression/distraction on the graduated scale. This strut is particularly indicated for bone transports.



The connection between two half rings is external to the circumference and is secured through a countersunk screw. This leaves all the holes in the ring unobstructed and available for surgery.



Foot rings are available in different diameters.
Foot ring extensions are available in 3 lengths. They connect to the ring through a countersunk screw that does not obstruct any of the holes of the ring.



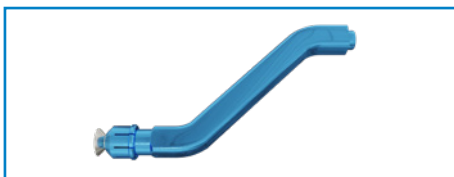
The foot ring hinged connection bolt ensures optimal connection and rotation of the front ring.



Screw clamps accept 4.0 mm Ø, 5.0 mm Ø and 6.0 mm Ø screws.
The base of the clamp is fitted with slots that ensure optimal rotation of the clamp to the bone.



The wire bolt can be connected to the ring easily using an L-shaped hexagonal wrench, thanks to the hexagonal hole on its top. This proves particularly useful where a standard wrench cannot be used.



45° oblique supports are available in two lengths. One side of the support is fitted with the quick connection system.
They can be used to join rings of different diameters.



Screw/wire supports have a threaded hole on the front side. This allows other supports or accessories to be screwed on top of it.

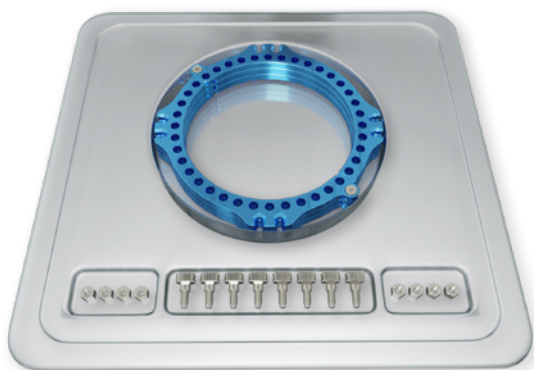
The base of the support is reinforced for better stability and resistance.



The rocker rail connects to the foot ring through threaded struts and bolts.
It is compatible with foot rings of different diameters.
The rocker rail is coated with a treaded rubber ensuring a better grip.

ClickIt CF Kit

CF TRAUMA KIT



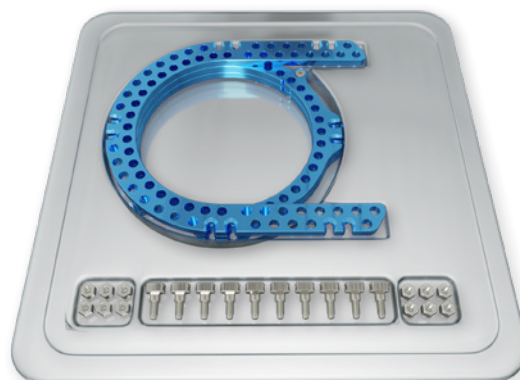
COMPONENTS

Description	Qty
Semi-rings	6
Countersunk screws	6
Wire clamps	8
Nuts	8

The kit is available in 3 sizes

Code	Description	Ø ring
50003TRST14	CF TRAUMA KIT Ø 140 mm	140
50003TRST16	CF TRAUMA KIT Ø 160 mm	160
50003TRST18	CF TRAUMA KIT Ø 180 mm	180

CF FOOT PLATE KIT



COMPONENTS

Description	Qty
Semi-rings	4
Countersunk screws	6
Foot plate	1
Double row foot plate	1
Foot plate joint	2
Wire clamps	10
Nuts	12

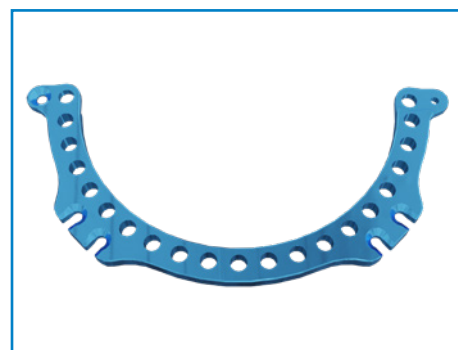
The kit is available in 4 sizes

Code	Description	Ø ring
50003ARST14	CF FOOT PLATE KIT Ø 140 mm	140
50003ARST16	CF FOOT PLATE KIT Ø 160 mm	160
50003ARST18	CF FOOT PLATE KIT Ø 180 mm	180
50003ARST20	CF FOOT PLATE KIT Ø 200 mm	200

Components

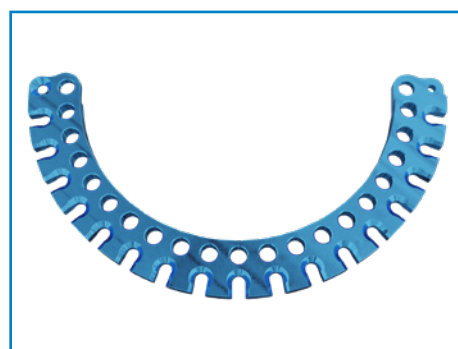
HALF RINGS

Code	Description
5000305ST2	80 mm Ø half ring (2 pcs)
5000307ST2	100 mm Ø half ring (2 pcs)
5000303ST2	120 mm Ø half ring (2 pcs)
5000301ST2	140 mm Ø half ring (2 pcs)
5000300ST2	160 mm Ø half ring (2 pcs)
5000302ST2	180 mm Ø half ring (2 pcs)
5000304ST2	200 mm Ø half ring (2 pcs)
5000306ST2	220 mm Ø half ring (2 pcs)



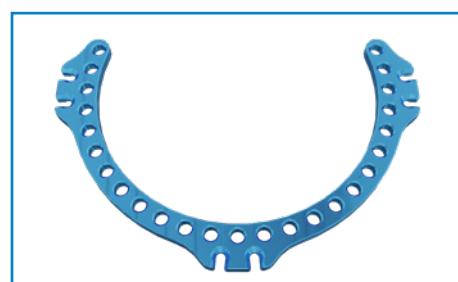
CROWN HALF RINGS

Code	Description
50003A.100ST2	100 mm Ø crown half ring (2 pcs)
50003A.120ST2	120 mm Ø crown half ring (2 pcs)
50003A.140ST2	140 mm Ø crown half ring (2 pcs)
50003A.160ST2	160 mm Ø crown half ring (2 pcs)
50003A.180ST2	180 mm Ø crown half ring (2 pcs)
50003A.200ST2	200 mm Ø crown half ring (2 pcs)
50003A.220ST2	220 mm Ø crown half ring (2 pcs)
50003A.240ST2	240 mm Ø crown half ring (2 pcs)



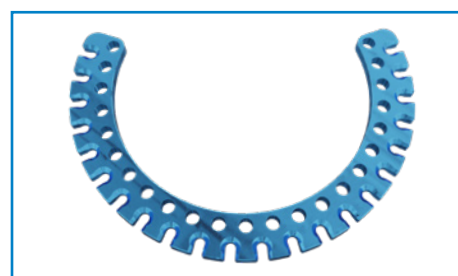
RINGS 5/8

Code	Description
5006102ST	120 mm Ø 5/8 ring
5006104ST	140 mm Ø 5/8 ring
5006106ST	160 mm Ø 5/8 ring
5006108ST	180 mm Ø 5/8 ring
5006110ST	200 mm Ø 5/8 ring
5006112ST	220 mm Ø 5/8 ring



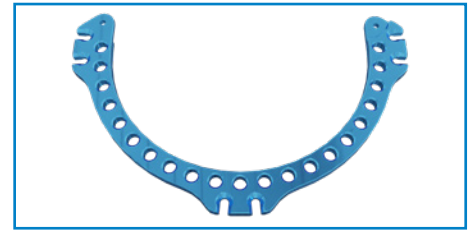
CROWN RINGS 5/8

Code	Description
5006A.120	120 mm Ø 5/8 crown ring
5006A.140	140 mm Ø 5/8 crown ring
5006A.160	160 mm Ø 5/8 crown ring
5006A.180	180 mm Ø 5/8 crown ring
5006A.200	200 mm Ø 5/8 crown ring
5006A.220	220 mm Ø 5/8 crown ring
5006A.240	240 mm Ø 5/8 crown ring



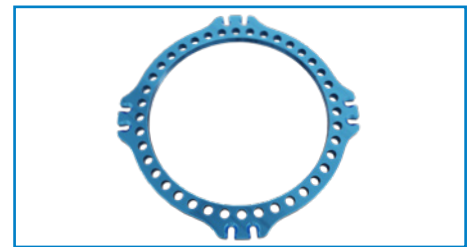
FOOT RINGS

Code	Description
5000361ST	120 mm Ø foot ring
5000363ST	140 mm Ø foot ring
5000360ST	160 mm Ø foot ring
5000362ST	180 mm Ø foot ring
5000364ST	200 mm Ø foot ring



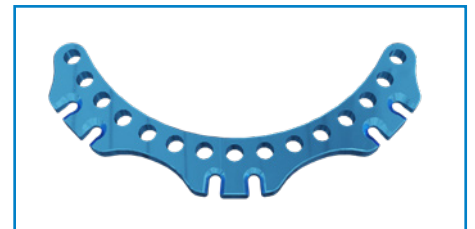
RINGS

Code	Description
500.301	140 mm Ø ring
500.300	160 mm Ø ring
500.302	180 mm Ø ring
500.304	200 mm Ø ring
500.306	220 mm Ø ring



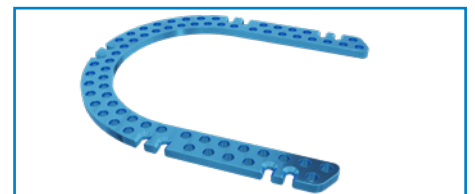
RING SEGMENTS

Code	Description
5006031ST	140 mm Ø ring segment
5006030ST	160 mm Ø ring segment
5006032ST	180 mm Ø ring segment
5006034ST	200 mm Ø ring segment
5006035ST	220 mm Ø ring segment



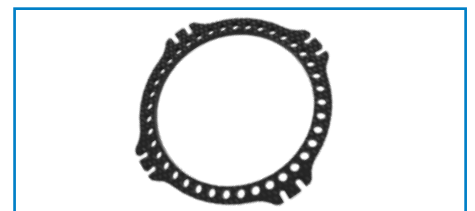
FOOT RING LONG

Code	Description
5000363LST	Foot ring long Ø 140 mm
5000360LST	Foot ring long Ø 160 mm
5000362LST	Foot ring long Ø 180 mm
5000364LST	Foot ring long Ø 200 mm



RADIOLUCENT CARBON RING

Code	Description
500C300	160 mm Ø radiolucent carbon ring NON-STERILE
500C302	180 mm Ø radiolucent carbon ring NON-STERILE



COUNTERSUNK SCREWS

Code	Description
5000352ST10	Half ring connection screw (10 pcs)
3000456ST10	Strut connection screw (10 pcs)



STATIC STRUTS

Code	Description
5000310ST2	30 mm L static strut (2 pcs)
5000312ST2	50 mm L static strut (2 pcs)
5000314ST2	100 mm L static strut (2 pcs)
5000316ST2	150 mm L static strut (2 pcs)



BIDIRECTIONAL TELESCOPIC STRUTS

Code	Description
5000320ST2	80-100 mm L bidirectional telescopic strut (2 pcs)
5000322ST2	100-145 mm L bidirectional telescopic strut (2 pcs)
5000324ST2	150-245 mm L bidirectional telescopic strut (2 pcs)



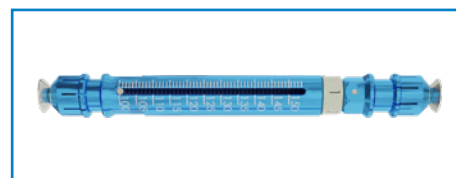
RAPID ADJUST STRUTS

Code	Description
50003B.100ST	100 mm L rapid adjust struts
50003B.150ST	150 mm L rapid adjust struts
50003B.250ST	250 mm L rapid adjust struts



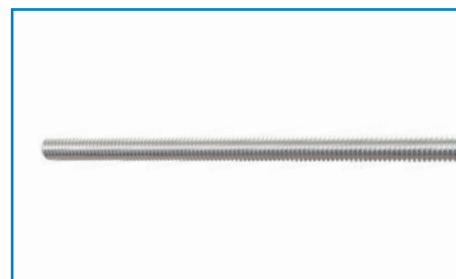
UNIDIRECTIONAL TELESCOPIC STRUTS

Code	Description
5006020ST2	65-80 mm L unidirectional telescopic strut (2 pcs)
5006022ST2	80-110 mm L unidirectional telescopic strut (2 pcs)
5006024ST2	100-150 mm L unidirectional telescopic strut (2 pcs)
5006026ST2	150-250 mm L unidirectional telescopic strut (2 pcs)



THREADED STRUTS

Code	Description
5000380ST2	M6 50 mm L threaded strut (2 pcs)
5000381ST2	M6 75 mm L threaded strut (2 pcs)
5000382ST2	M6 100 mm L threaded strut (2 pcs)
5000384ST2	M6 150 mm L threaded strut (2 pcs)
5000385ST2	M6 200 mm L threaded strut (2 pcs)
5000386ST2	M6 250 mm L threaded strut (2 pcs)
5000388ST2	M6 300 mm L threaded strut (2 pcs)
5000390ST2	M6 400 mm L threaded strut (2 pcs)



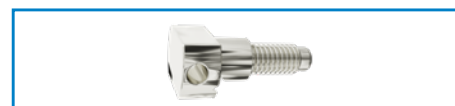
45° OBLIQUE SUPPORTS

Code	Description
5006045ST	50 mm L - 45° oblique support
5006046ST	100 mm L - 45° oblique support



CLAMPS

Code	Description
5000330ST2	Wire clamp (2 pcs)
5000330ST4	Wire clamp (4 pcs)



Code	Description
5000330LP	Long wire clamp with plate NON-STERILE
5000330P	ClickIt CF wire clamp plate NON-STERILE
500.330	CF wire bolt NON-STERILE



Code	Description
5000332ST	Single screw clamp



Code	Description
5000333ST	2-screw clamp
5000334ST	3-screw clamp



Accessories

Code	Description
5000335ST	Support for 1-hole screw/bolt
5000336ST	Support for 2-hole screw/bolt
5000337ST	Support for 3-hole screw/bolt



Code	Description
5006040ST	Distraction nut for threaded struts



Code	Description
5006042ST	Adaptation plate



Code **Description**
5006044ST5 13 mm Ø 2 mm thick washer (5 pcs)



Code **Description**
5006052ST2 M6 hemispherical washer (2 pcs)



Code **Description**
5000354ST20 10 mm nut (20 pcs)



Code **Description**
5000356ST10 M6 20 mm L bolt (10 pcs)



Code **Description**
5006050ST Universal hinge coupling



Code **Description**
5006056ST2 90° hinge (2 pcs)



Code **Description**
5006057-10 Wire stoppers (10 pcs)



Code **Description**
5006054ST2 Male hinge (2 pcs)
5006055ST2 Female hinge (2 pcs)



Code **Description**
5006058ST Hybrid connecting post (FEP)

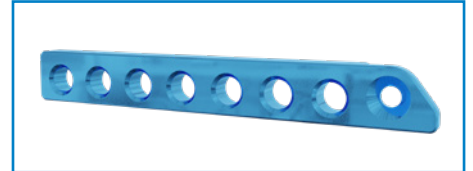


Code	Description
5006506ST	Hybrid connecting post (ClickIt ER)

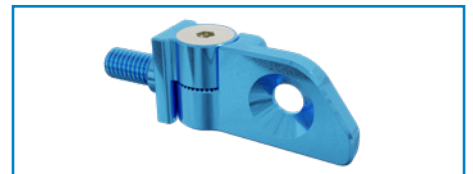


FOOT RING ACCESSORIES

Code	Description
5000370ST2	5-hole foot ring extension (2 pcs)
5000372ST2	7-hole foot ring extension (2 pcs)
5000373ST2	10-hole foot ring extension (2 pcs)



Code	Description
5000374ST	Foot ring connection bolt



Code	Description
5000375ST2	Foot ring support (2 pcs)
5000375-2	NON-STERILE foot ring support (2 pcs)



WIRES

Code	Description
5000340	1.8 mm Ø 400 mm L NON-STERILE smooth K-wire
5000342	1.8 mm Ø 400 mm L NON-STERILE olive K-wire
5000340ST5	1.8 mm Ø 400 mm L smooth K-wire (5 pcs)
5000342ST5	1.8 mm Ø 400 mm L olive K-wire (5 pcs)
5000340T	1.8 mm Ø 400 mm L NON-STERILE smooth titanium K-wire
5000340TST5	1.8 mm Ø 400 mm L smooth titanium K-wire (5 pcs)



Screws

HA COATED UNIVERSAL STAINLESS-STEEL SCREWS

Code	Description
VA4H150.40	4.0 mm Ø, 150 mm L, 40 mm L thread HAP self-drilling cortical screw
VA4H150.55	4.0 mm Ø, 150 mm L, 55 mm L thread HAP self-drilling cortical screw
VA5H150.40	5.0 mm Ø, 150 mm L, 40 mm L thread HAP self-drilling cortical screw
VA5H150.55	5.0 mm Ø, 150 mm L, 55 mm L thread HAP self-drilling cortical screw
VA5H150.70	5.0 mm Ø, 150 mm L, 70 mm L thread HAP self-drilling cortical screw
VA6H150.30	6.0 mm Ø, 150 mm L, 30 mm L thread HAP self-drilling cortical screw
VA6H150.40	6.0 mm Ø, 150 mm L, 40 mm L thread HAP self-drilling cortical screw
VA6H150.55	6.0 mm Ø, 150 mm L, 55 mm L thread HAP self-drilling cortical screw
VA6H150.70	6.0 mm Ø, 150 mm L, 70 mm L thread HAP self-drilling cortical screw
VA6H150.85	6.0 mm Ø, 150 mm L, 85 mm L thread HAP self-drilling cortical screw
VA6H250.40	6.0 mm Ø, 250 mm L, 40 mm L thread HAP self-drilling cortical screw
VA6H250.55	6.0 mm Ø, 250 mm L, 55 mm L thread HAP self-drilling cortical screw
VA6H250.70	6.0 mm Ø, 250 mm L, 70 mm L thread HAP self-drilling cortical screw
VA6H250.85	6.0 mm Ø, 250 mm L, 85 mm L thread HAP self-drilling cortical screw
VA5.150.30	Self-drilling cortical screw Ø 5.0 mm L 150 mm, thread L 30 mm
VA6.150.30	Self-drilling cortical screw Ø 6.0 mm L 150 mm, thread L 30 mm

HA COATED STANDARD STAINLESS-STEEL SCREWS (NOT SELF-DRILLING)

Code	Description
5000531H	5.0 mm Ø, 80 mm L HAP coated cortical screw
5000532H	5.0 mm Ø, 100 mm L HAP coated cortical screw
5000533H	5.0 mm Ø, 120 mm L HAP coated cortical screw
5000534H	5.0 mm Ø, 140 mm L HAP coated cortical screw
5000501H	6.0 mm Ø, 100 mm L HAP coated cortical screw
5000502H	6.0 mm Ø, 120 mm L HAP coated cortical screw
5000503H	6.0 mm Ø, 140 mm L HAP coated cortical screw
5000504H	6.0 mm Ø, 160 mm L HAP coated cortical screw
5000505H	6.0 mm Ø, 180 mm L HAP coated cortical screw

STANDARD STAINLESS-STEEL SCREWS

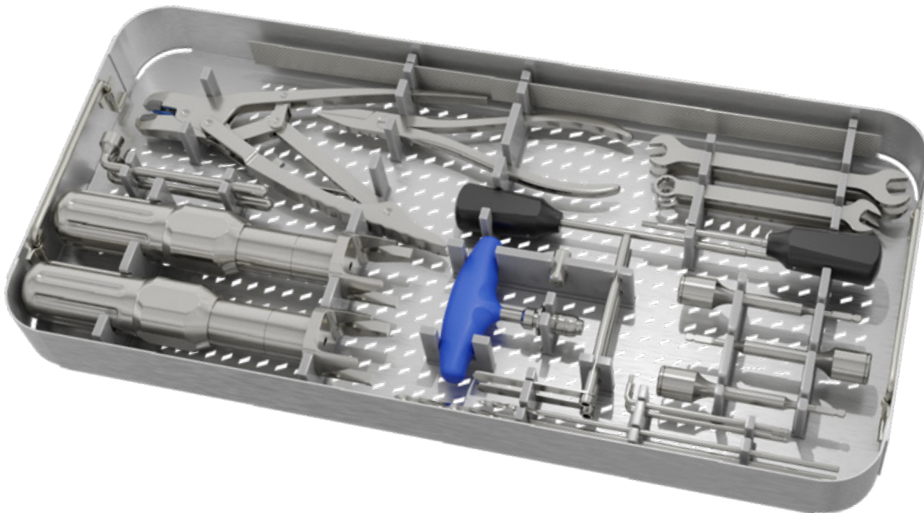
Code	Description
5000566ST	4.0 mm Ø, 80 mm L cortical screw
5000567ST	4.0 mm Ø, 100 mm L cortical screw
5000568ST	4.0 mm Ø, 120 mm L cortical screw
5000569ST	4.0 mm Ø, 140 mm L cortical screw
5000536ST	5.0 mm Ø, 80 mm L cortical screw
5000537ST	5.0 mm Ø, 100 mm L cortical screw
5000538ST	5.0 mm Ø, 120 mm L cortical screw
5000539ST	5.0 mm Ø, 140 mm L cortical screw
5000540ST	5.0 mm Ø, 160 mm L cortical screw
5000506ST	6.0 mm Ø, 100 mm L cortical screw
5000507ST	6.0 mm Ø, 120 mm L cortical screw
5000508ST	6.0 mm Ø, 140 mm L cortical screw
5000509ST	6.0 mm Ø, 160 mm L cortical screw
5000510ST	6.0 mm Ø, 180 mm L cortical screw
5000586ST	6.0 mm Ø, 200 mm L cortical screw
5000587ST	6.0 mm Ø, 220 mm L cortical screw
5000588ST	6.0 mm Ø, 240 mm L cortical screw

UNIVERSAL STAINLESS-STEEL SCREWS

Code	Description
VA4.150.40	4.0 mm Ø, 150 mm L, 40 mm L thread self-drilling cortical screw
VA4.150.55	4.0 mm Ø, 150 mm L, 55 mm L thread self-drilling cortical screw
VA5.150.40	5.0 mm Ø, 150 mm L, 40 mm L thread self-drilling cortical screw
VA5.150.55	5.0 mm Ø, 150 mm L, 55 mm L thread self-drilling cortical screw
VA5.150.70	5.0 mm Ø, 150 mm L, 70 mm L thread self-drilling cortical screw
VA6.150.40	6.0 mm Ø, 150 mm L, 40 mm L thread self-drilling cortical screw
VA6.150.55	6.0 mm Ø, 150 mm L, 55 mm L thread self-drilling cortical screw
VA6.150.70	6.0 mm Ø, 150 mm L, 70 mm L thread self-drilling cortical screw
VA6.150.85	6.0 mm Ø, 150 mm L, 85 mm L thread self-drilling cortical screw
VA6.250.40	6.0 mm Ø, 250 mm L, 40 mm L thread self-drilling cortical screw
VA6.250.55	6.0 mm Ø, 250 mm L, 55 mm L thread self-drilling cortical screw
VA6.250.70	6.0 mm Ø, 250 mm L, 70 mm L thread self-drilling cortical screw
VA6.250.85	6.0 mm Ø, 250 mm L, 85 mm L thread self-drilling cortical screw

Instruments *

Code	Description	Qty
5006018	Complete ClickIt CF instrument sterilization set	
Composition:		
5000124L	3 mm (extended) hexagonal screwdriver	1
5000124	3 mm hexagonal screwdriver	1
5006000	3 mm L-shaped hexagonal wrench	2
5006001	10-10 mm flat wrench	2
5006002	10-12 mm flat wrench	2
5006003	10 mm L-shaped tubular wrench	2
5006010	3.5 mm Ø, 110 mm L drill guide	1
5006012	4.5 mm Ø, 110 mm L drill guide	1
5000222	3.5 mm Ø, 200 mm L twist drill	1
5000224	4.5 mm Ø, 250 mm L twist drill	1
5000600	T-wrench for Ø 4.0 mm screws	1
5000601	T-wrench for Ø 5.0 mm screws	1
5000602	T-wrench for Ø 6.0 mm screws	1
5006004	Tubular wire tensioner	2
5006006	Wire cutter	1
5006007	Wire bending pliers	1
5006008	Stainless scale ruler	1
5006014	Wire tensioner adapter	1
5006016	Empty ClickIt CF instrument sterilization set	1



* Implantable and sterile devices are covered by CE 1936 mark, non-sterile reusable instruments are CE marked

Sterilization

ClickIt CF devices are supplied sterile.
It is recommended that the instruments be sterilized in a saturated steam autoclave as follows:

TEMPERATURE: 134°

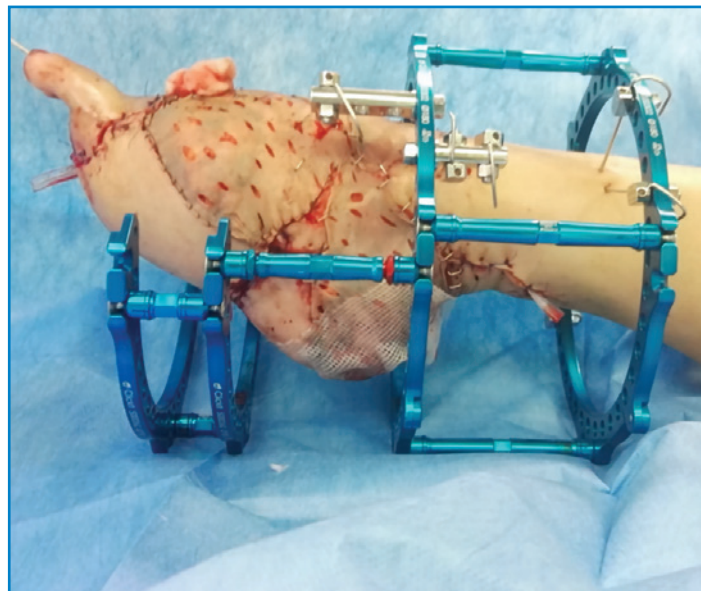
EXPOSURE: 5 minutes

Clinical Cases

CASE 1

Dr. G. Caizzi, Prof. B. Moretti

Orthopaedic and Traumatology Clinic, University of Bari



50-year old ♂
Road trauma
Emergency cleaning and fixation with K-wires
Postoperative necrosis

Fixation using ClickIt CF fixator and microvascular myocutaneous flap 4 months after injury

Subsequent correction of equinism of the foot with external circular fixator using hinges



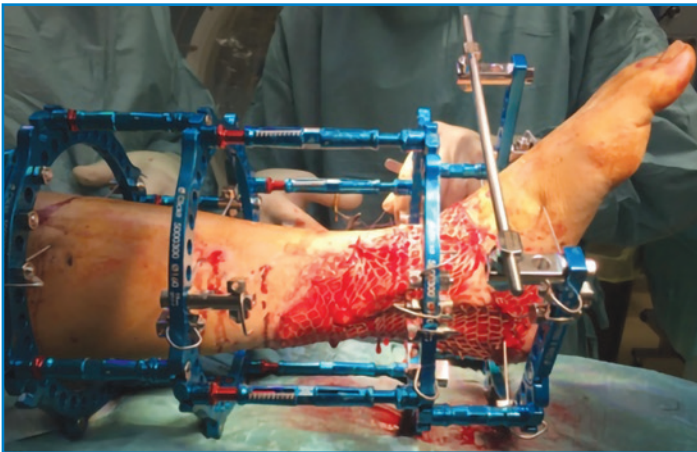
Clinical follow-up after 1 year



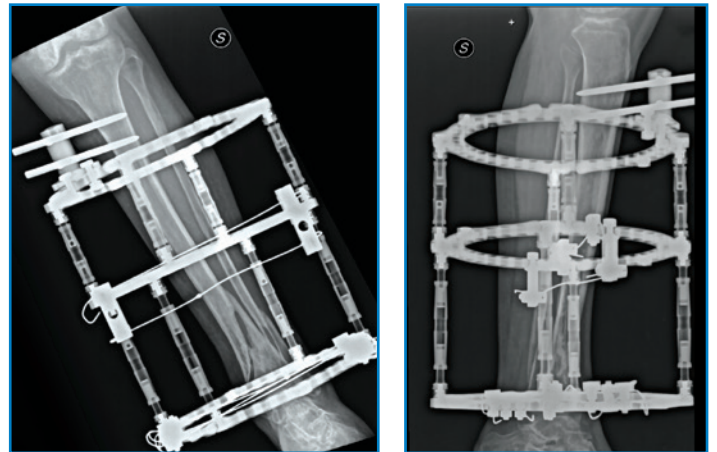
40-year old ♀
Sports injury
III A compound fracture of left distal tibia
Assessment and x-ray



Emergency fixation using a temporary external fixator
Skin necrosis after 2 weeks



VAC treatment, implant with ClickIt CF fixator and dermal epidermal graft



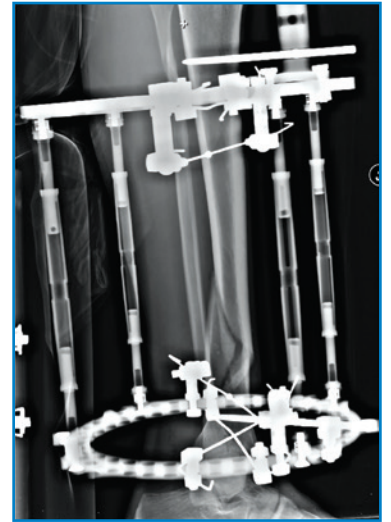
Follow-up x-rays prior to removal after 5 months



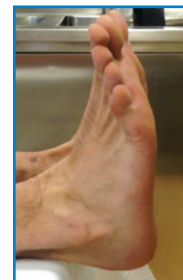
Follow-up x-ray 3 months after removal and assessment



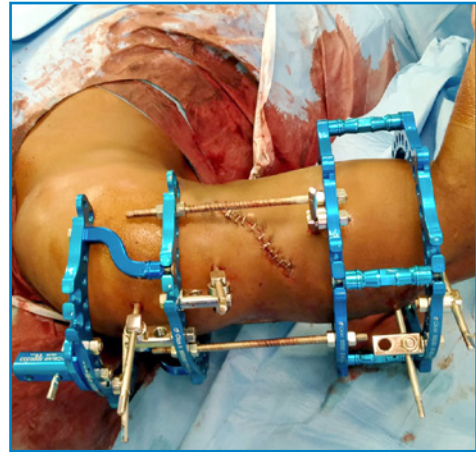
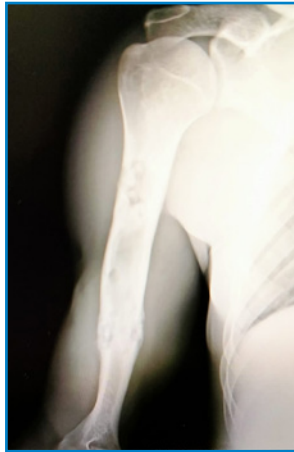
Full joint recovery



36-year old ♂
Road trauma
Grade II compound of left distal tibia
Emergency treatment using ClickIt CF fixator
Post-operative follow-up X-ray

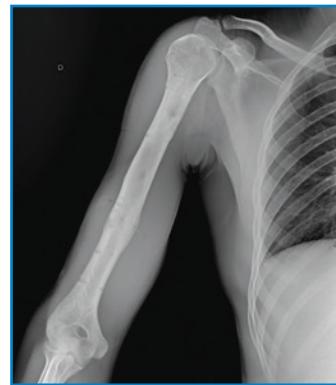


Healing after 4 months
Follow-up x-ray 1 month after removal and assessment, with full joint recovery

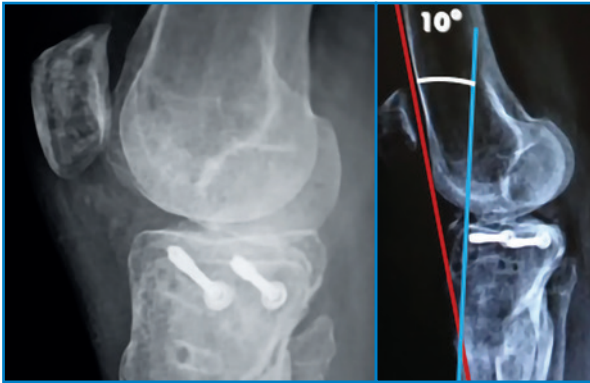


23-year old ♂
Gunshot wound out resulting in
Osteomyelitis

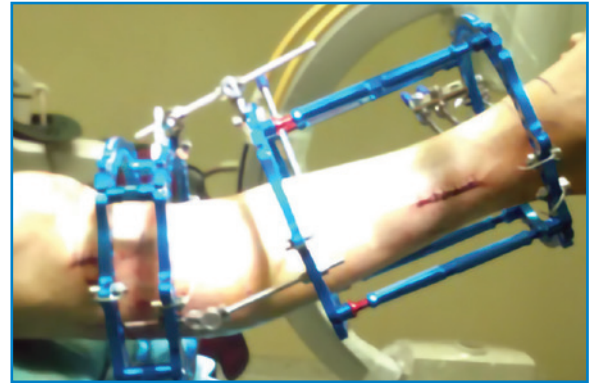
Cleaning and removal of proximal and distal
sequestration and reaming of the intramedullary
canal Fixation using ClickIt CF fixator



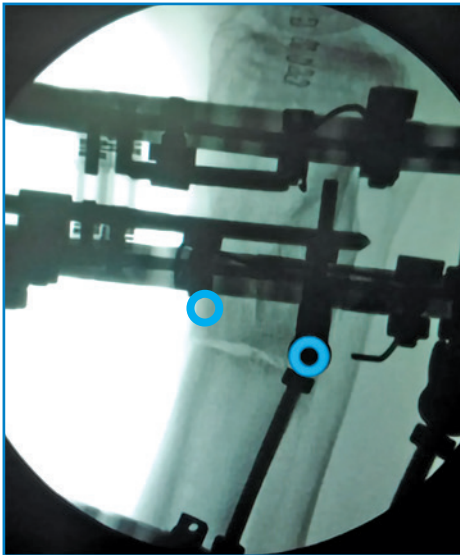
Removal after 5 months
Postoperative assessment and follow-up x-ray



43-years old ♂
Malunion of fracture from road trauma (proximal tibia)
10° recurved deformity with 1 cm displacement



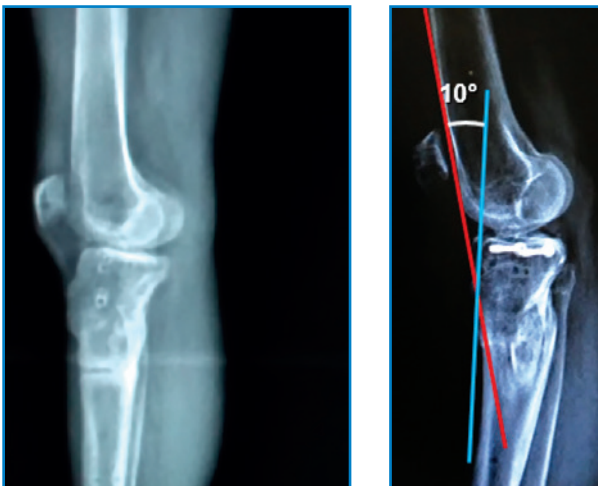
Removal of cannulated screws and application of ClickIt CF fixator on deformity with hinges



Postoperative x-ray



Follow-up x-ray after 150 days and healing



Removal of fixator after 150 days
Follow-up x-ray under load after removal vs preoperative x-ray

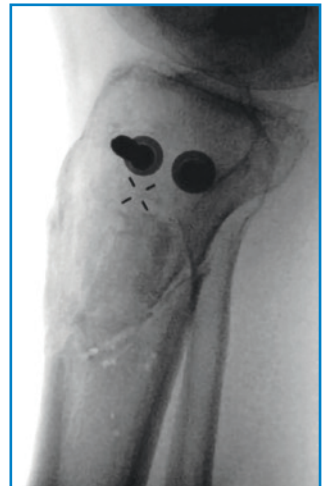
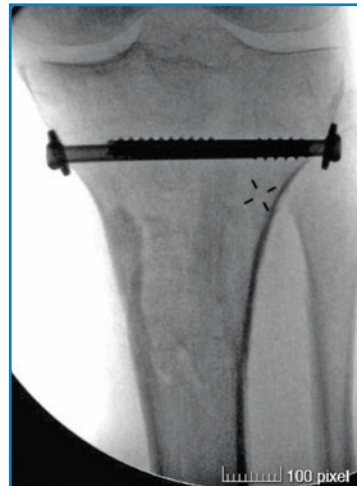


Assessment after 180 days



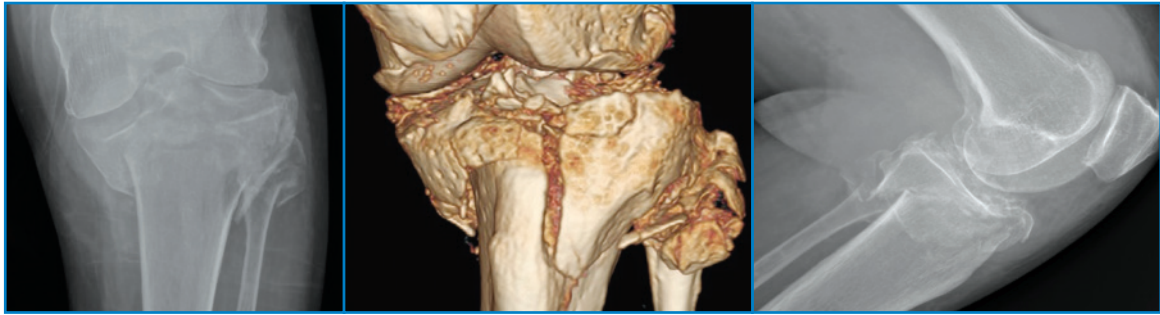
50-years old ♂
Motorcycle road trauma
High energy proximal tibia fracture with skin damage

Fixation using cannulated screws and ClickIt CF
fixator Assessment and postoperative x-ray

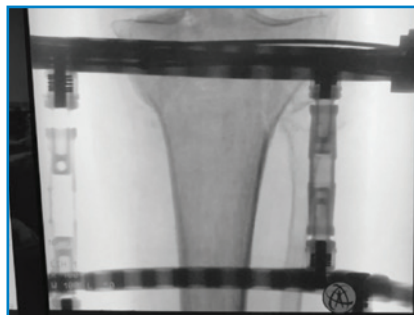


Assessment and follow-up after 3 months

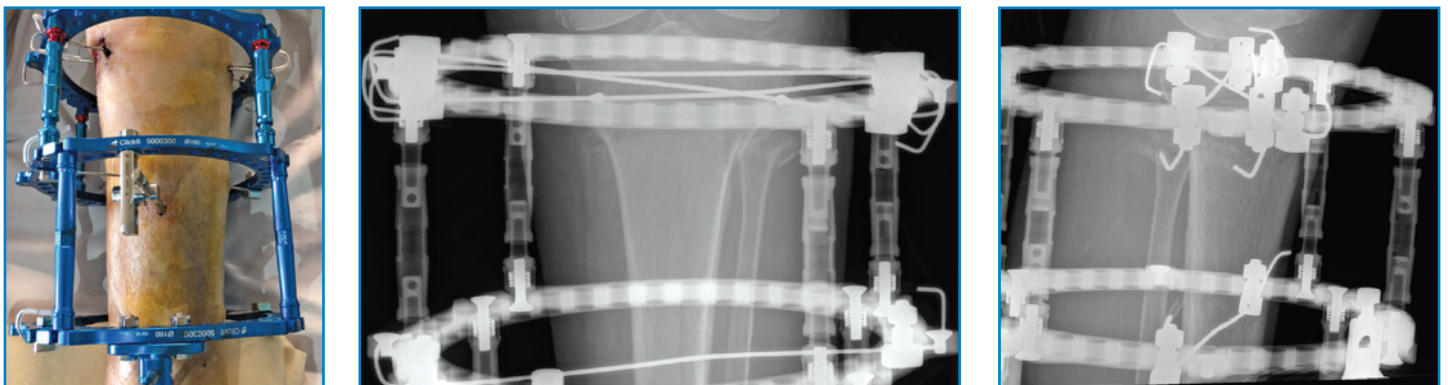
Removal of fixator and final follow-up
x-ray after 3 months



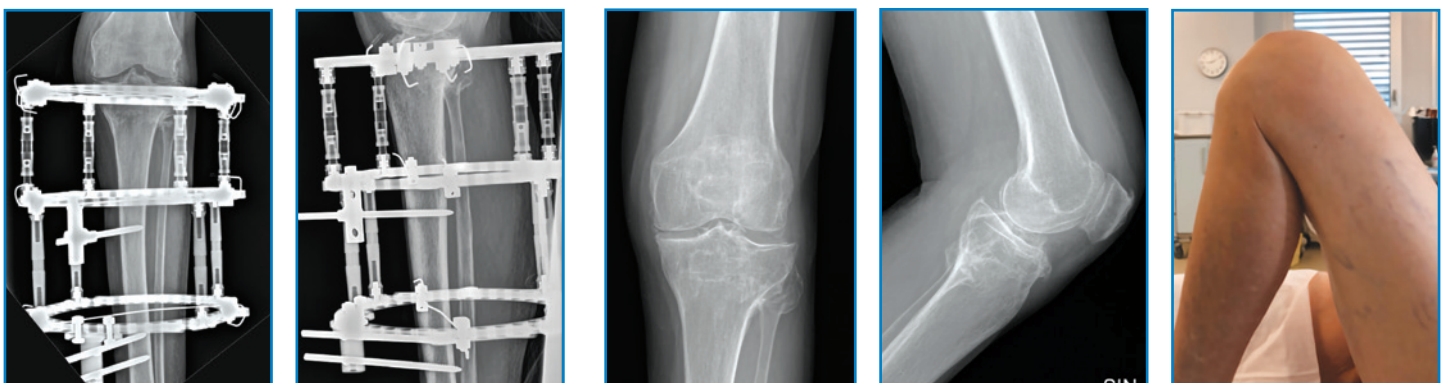
36-year old ♀ - Road trauma
Facial, head, thoracic trauma and left leg fracture AO/OTA 41-C3



Application of ClickIt CF fixator using K-wires with opposing olives in the proximal part
Intraoperative x-ray

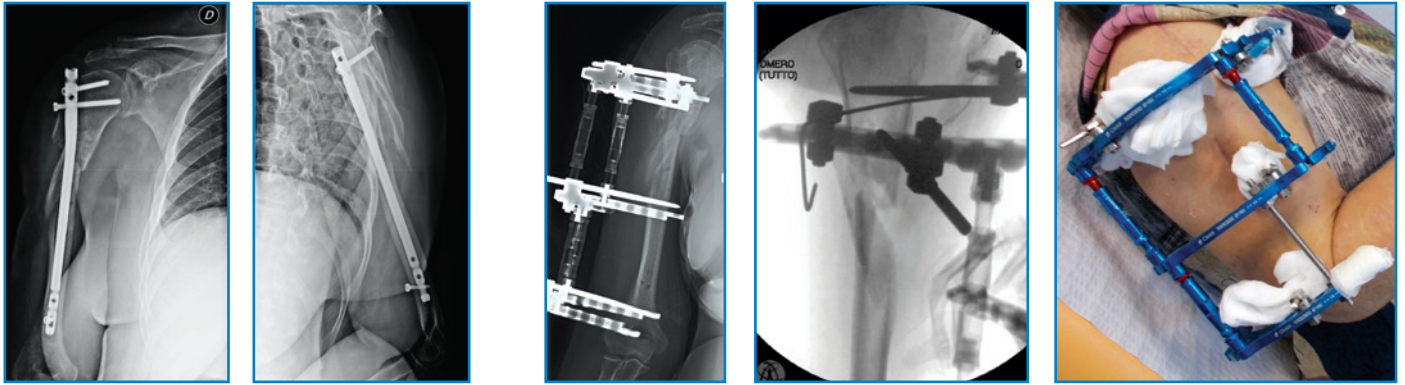


Postoperative Assessment and Postoperative x-ray



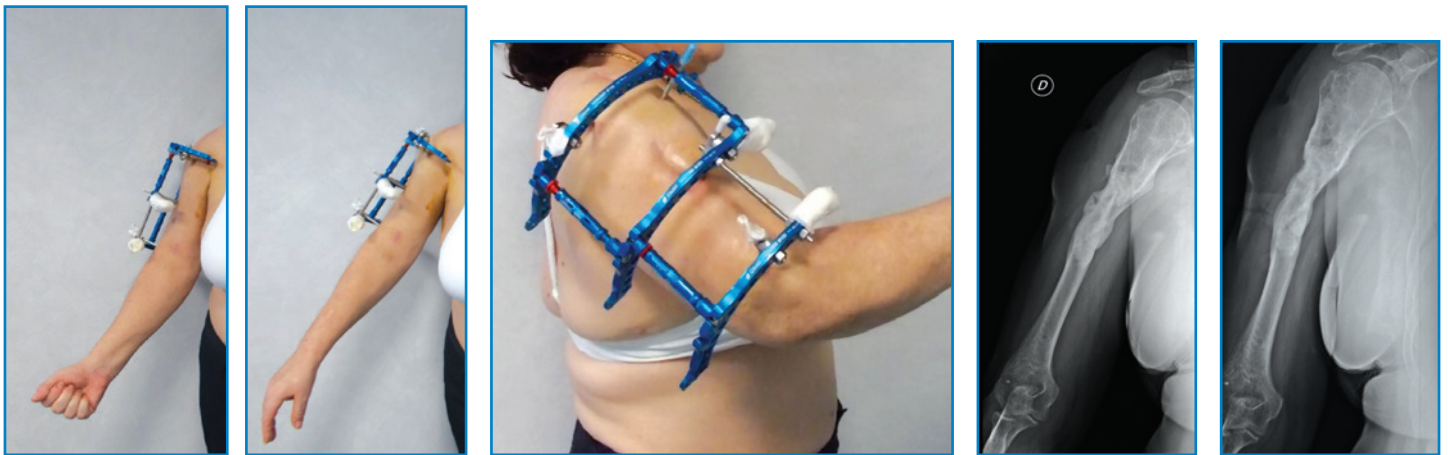
Pre-removal x-ray after 3 months

Follow-up x-ray after 1 month of removal and assessment



65-year old ♀
Septic complication after fixation with intramedullary nail right humerus

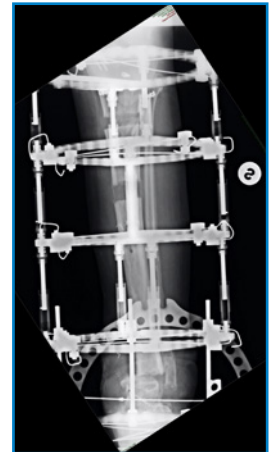
Removal of fixator and partial cleaning of area with removal of sequestration
Fixation using ClickIt CF fixator
Postoperative x-ray and postoperative assessment



Pre-removal assessment
Removal of fixator after 4 months and follow-up x-ray after 1 month of removal



Follow-up assessment after 15 days



21-year old ♂
Post-traumatic septic nonunion of tibiotarsus and distal osteomyelitis of tibia with equinus deformity

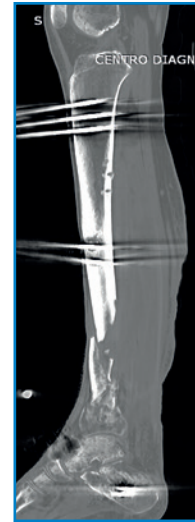
Resection of infected area
Application of ClickIt CF fixator and double osteotomy for recovery of dysmetria and ankle arthrodesis with functional positioning of foot



Removal of fixator after 10 months



Follow-up x-ray and assessment after 60 days of removal



21-year old ♀

Motorcycle road trauma

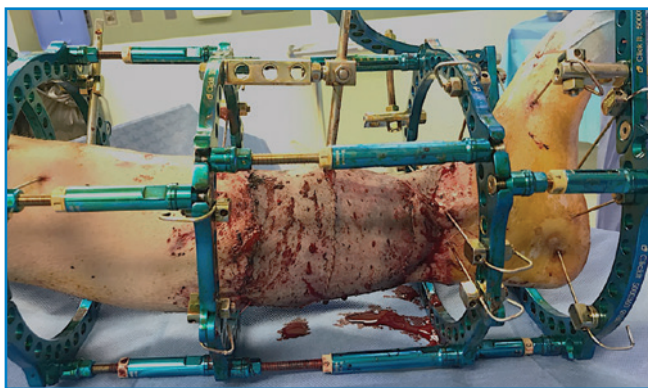
Compound tibia fracture AO/OTA 43C2 - G.A. III A

Postoperative x-ray after emergency fixation using a temporary external fixator

6 months

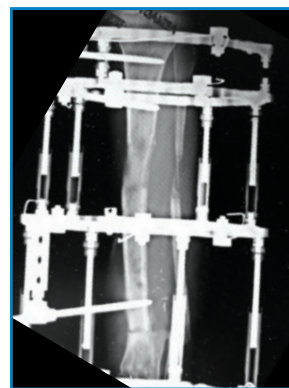
Assessment and diagnostic follow-up

Infected area findings



8 months

ClickIt CF fixation implant, bone resection, skin resection of the infected part and covering
Proximal lengthening osteotomy



Follow-up x-ray after 14 months

Follow-up x-ray after 16 months following removal of fixator

Assessment after 1 month of removal

CASE 11

Dr. E. Scirica, Dr. R. Sciortino - Orthopaedics and Traumatology, ARNAS Civico Hospital of Palermo *
 Dr. C. Salomone - M.I.O.S., Santa Maria di Misericordia Hospital of Albenga (Savona) **



*



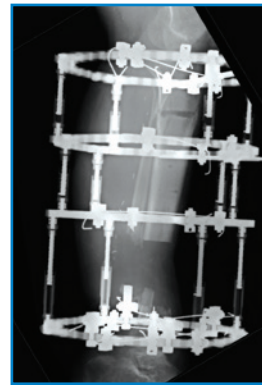
*

25-year old ♂
 Road trauma
 Tibial sub-amputation (left tibia)

Trauma x-ray



*



**

Emergency fixation using FEP fixator Postoperative assessment after 20 days
 Development of post-traumatic osteomyelitis after about 60 days

Radical debridement of bone and soft tissue in the infected area
 Fixation using ClickIt CF fixator suitable for bone recovery through double-level osteotomy.



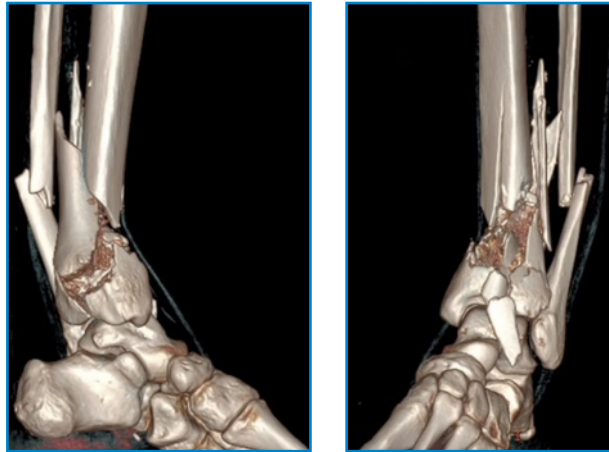
**

After 10 days II osteotomy

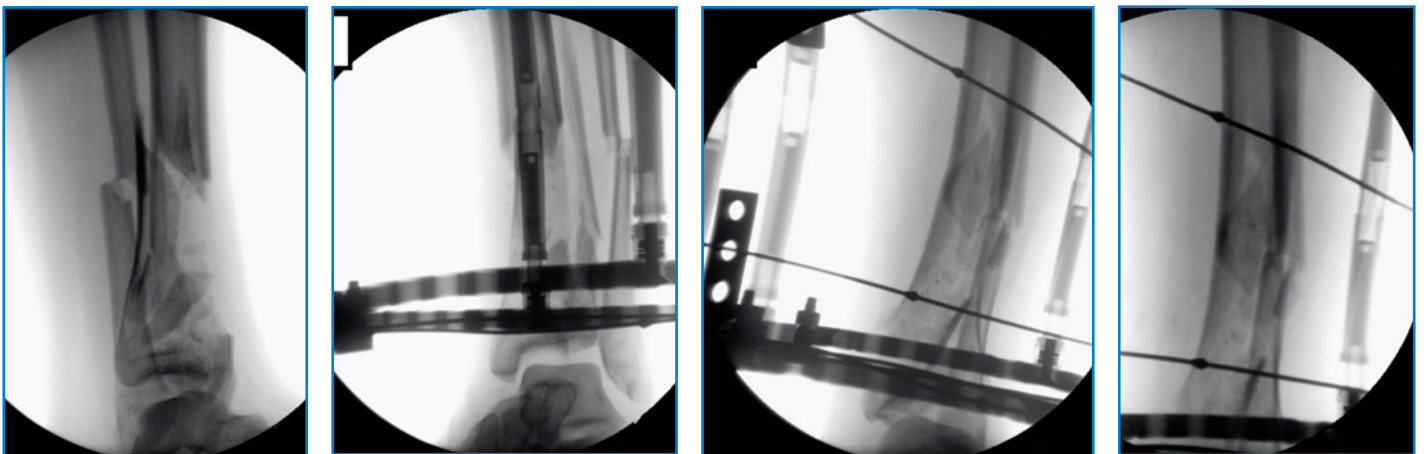


**

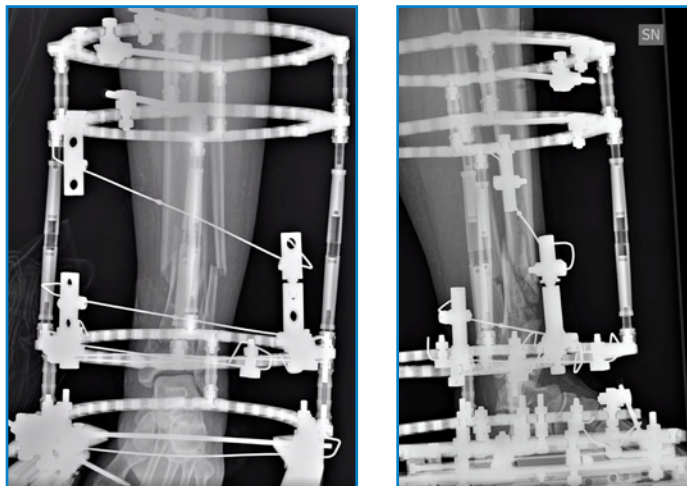
Removal of fixator 8 months after implantation
 Follow-up x-ray and assessment 1 month after removal



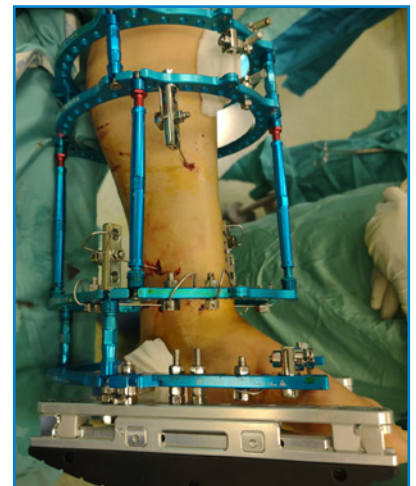
38-year old ♀
Polytrauma- tibial pilon and pelvis fracture



Reduction and stabilization using Clickit Cf
Intra-operative x rays



Post-operative x rays



Application of rocker rail system



HEADQUARTERS

Via P. Gobetti, 56r - 16145 Genova
Tel. +39 010 30801 - Fax +39 010 3080210
www.mikai.it - servizio.clienti@mikai.it

MANUFACTURING FACILITY

Via Canestrello, 2 - 36050 Monteviale (VI)
Tel. +39 0444 950100 - Fax +39 0444 950133
www.mikai.it - servizio.clienti@mikai.it