

CLICKIT ER ELBOW

SELF-CENTRING ELBOW EXTERNAL FIXATOR

Micrometric distraction of the joint

Quick connection clamps

Self-centring

Sterile kit



Indications

- Intra-articular fractures of the elbow
- Unstable elbow fractures
- Elbow dislocations
- Distal humerus fractures associated with soft tissue damage

CHARACTERISTICS

Quick connection clamps
 Self-centring body
 Ergonomic and low profile
 Universal
 Sterile

CLINICAL ADVANTAGES

Fast application
 Easy application
 Lightweight
 Same for left and right elbow
 Ready to use

Components



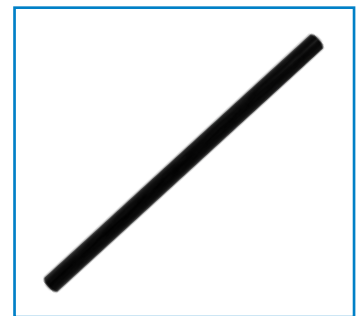
Body of the fixator
 Self-centring and with the possibility of micrometric joint distraction



Quick connection clamp
 Connects 8.0 mm rods, 6.0 mm rods, 3.0, 4.0, 5.0, 6.0 mm screws



Multiple screw clamp
 Easy positioning of 2 and 3 screws



Rod
 Radiolucent, 8.0 and 6.0 mm

ClickIt ER Elbow kit

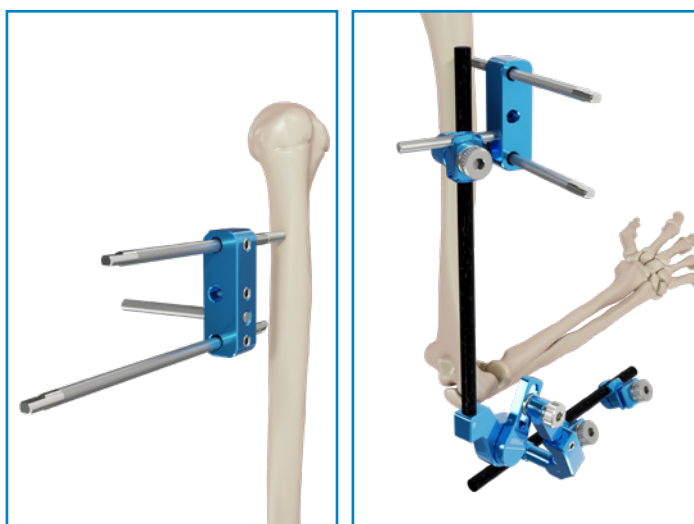


Description	Q.ty
Carbon Fibre rod Ø 6.0 mm L 300 mm	1
Body of the fixator	1
Clickit Elbow clamp	5
Self drilling cortical screw Ø 5.0 mm L 150, thread 55 mm	2
Self drilling cortical screw Ø 4.0 mm L 150, thread 40 mm	2

Surgical technique



After having performed the appropriate reduction of the joint, the first step is to locate the centre of rotation. Draw a 1/2cm circle in proximity of the centre of rotation. Position the centre of rotation of the external fixator (circled in red) in proximity to the latter. The external fixator has to be in the neutral position, with the lateral and inferior screws tightened.



Option A: proximal stabilization

Humeral screws: humeral diaphysis, lateral and distal to the deltoid insertion.

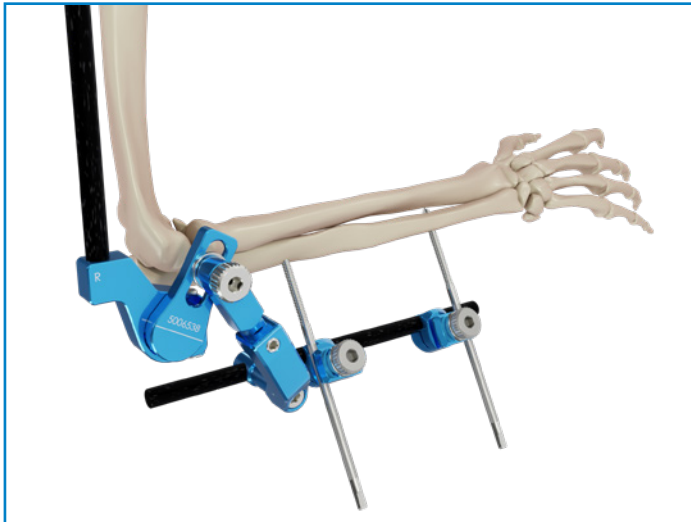
Insert two Ø 5.0 mm screws using the multiple screw clamp as a guide. The carbon fibre rod has to be parallel to the humerus. Use a ClickIt ER elbow clamp to connect the multiple screw clamp to the rod.



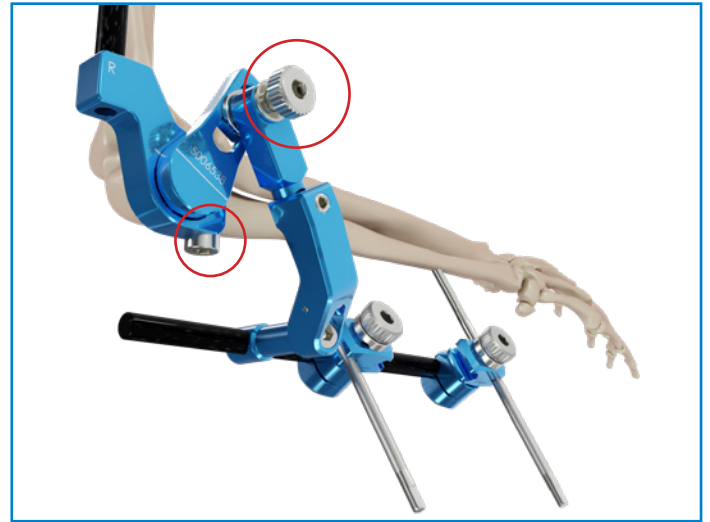
Option B: Distal and proximal stabilization

Two screws can also be inserted separately. In this case insert the distal screw first and the proximal screw second.

Screws must be inserted taking into consideration that the radial nerve passes approximately four fingers proximal to the humeral condyle.



Ulna screw positioning: free positioning of screws keeping in mind that the rod has to be parallel to the ulna. 4.0 mm screws.



Loosen the screws circled in red using the 5.0 mm screwdriver.



Maintaining the elbow reduced perform 45-90 degree flexion and extension movements, until the joint finds its position. At this point tighten the screws previously loosened very carefully a bit at the time. Start from 1 and proceed with 2.

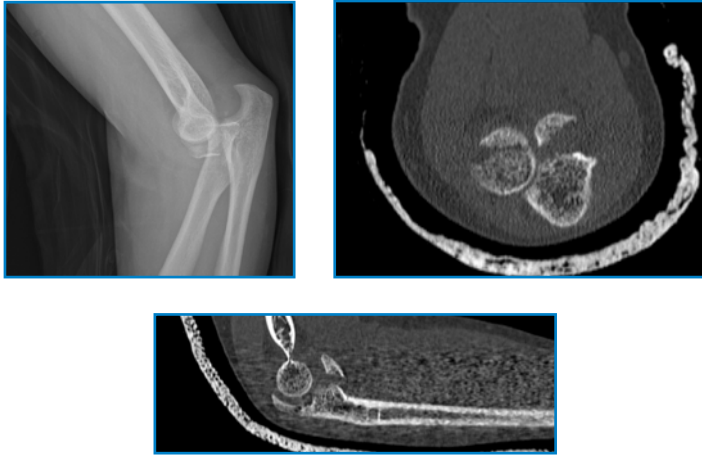


Once the elbow is stabilised and the fixator is centred, untighten the screw circled in red to give a better alignment in varus/valgus.

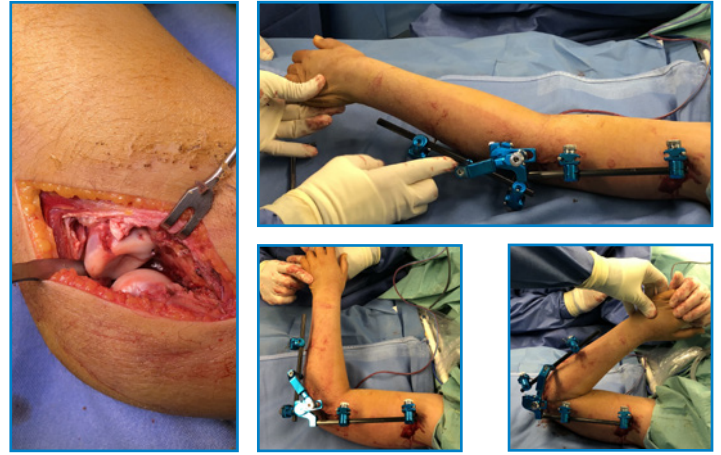
Clinical cases

CASE 1

Dr. P. Bigazzi - Firenze



17 year old female, terrible triad



Medial access, coronoid orif, repair of the collateral ligament and external fixator application post operatively



Post-operative ct scan and x rays to assess the centre of rotation



X ray follow up 6 months after the removal of the external fixator



Clinical follow up, 6 months after removal

CASE 2

Dr. P. Bigazzi - Firenze



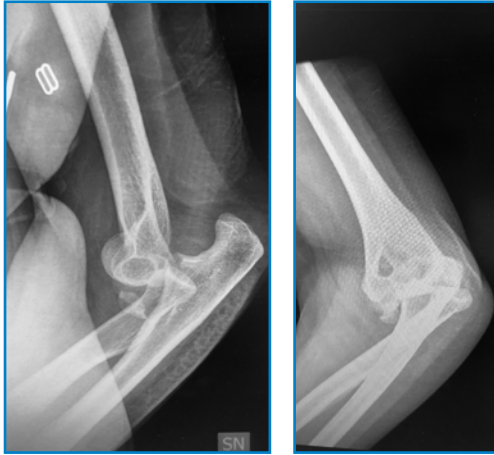
47 year old female
Dislocation of the right elbow



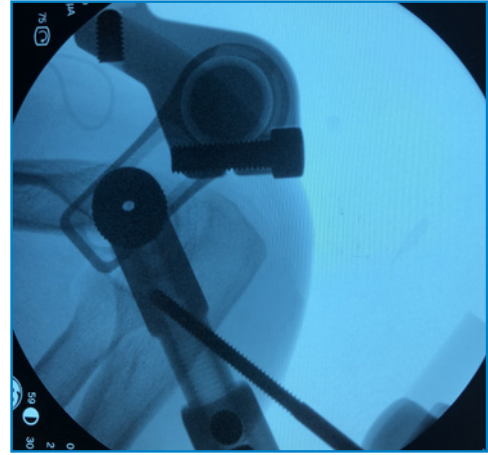
Insertion of the collateral ligament reinforced with the
palmar ligament and application
of the external fixator



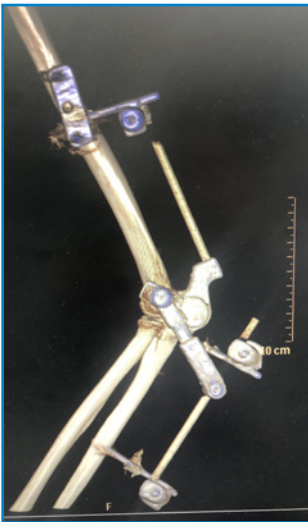
X ray and clinical follow up 6 months after removal of the external fixator



60 year old female
Fracture dislocation of the elbow
(terrible triad)



Coronoid and radial head orif, repair of the collateral
ligament and application of external fixator



Follow up 6 months after removal

Code

CLICKIT ER ELBOW KIT 5006540ST

ACCESSORIES

Code	Description
5006539ST	ClickIt ER Elbow clamp
5006504G	ER Elbow multiscrew clamp
5006.20ST	Rod Ø 6.0 mm L. 200 mm sterile
5006.25ST	Rod Ø 6.0 mm L. 250 mm sterile
5006.30ST	Rod Ø 6.0 mm L. 300 mm sterile
VA4.150.40	Self-drilling cortical screw 4x150, thread 40 mm
VA4.150.55	Self-drilling cortical screw 4x150, thread 55 mm
VA5.150.40	Self-drilling cortical screw 5x150, thread 40 mm
VA5.150.55	Self-drilling cortical screw 5x150, thread 55 mm
VA6.150.40	Self-drilling cortical screw 6x150, thread 40 mm
VA6.150.55	Self-drilling cortical screw 6x150, thread 55 mm

INSTRUMENTS *

Code	Description	Q.ty
5006562	Complete ClickIt ER instrument trax	
Comprising:		
5006.04	Ø 4.0 mm adapter t-wrench	1
5006.05	Ø 5.0 mm adapter t-wrench	1
5000604	T-handle with AO attachment	1
5000605	Hexagonal rod Ø 5.0 mm AO connection	1
5006000	3.0 mm L-shaped Allen key	1
5002074	5.0 mm L-shaped Allen key	1
5006010	Drill guide Ø 3.5 mm L 110 mm	1
5000222	Twist drill Ø 3.5 mm	1
5006560ER	ClickIt ER sterilization trax	1

* Implantable and sterile devices are covered by the CE-1936 marking, while non-sterile reusable instruments are covered by the CE marking

Sterilization

The components of the ClickIt ER Elbow system are supplied sterile.

We indicate sterilizing the instruments in saturated steam autoclave according to the following parameters:

TEMPERATURE: 134°

EXPOSURE: 5 min







HEADQUARTERS

Via P. Gobetti, 56r - 16145 Genova
Tel. +39 010 30801 - Fax +39 010 3080210
www.mikai.it - servizio.clienti@mikai.it

MANUFACTURING FACILITY

Via Canestrello, 2 - 36050 Monteviale (VI)
Tel. +39 0444 950100 - Fax +39 0444 950133
www.mikai.it - servizio.clienti@mikai.it