

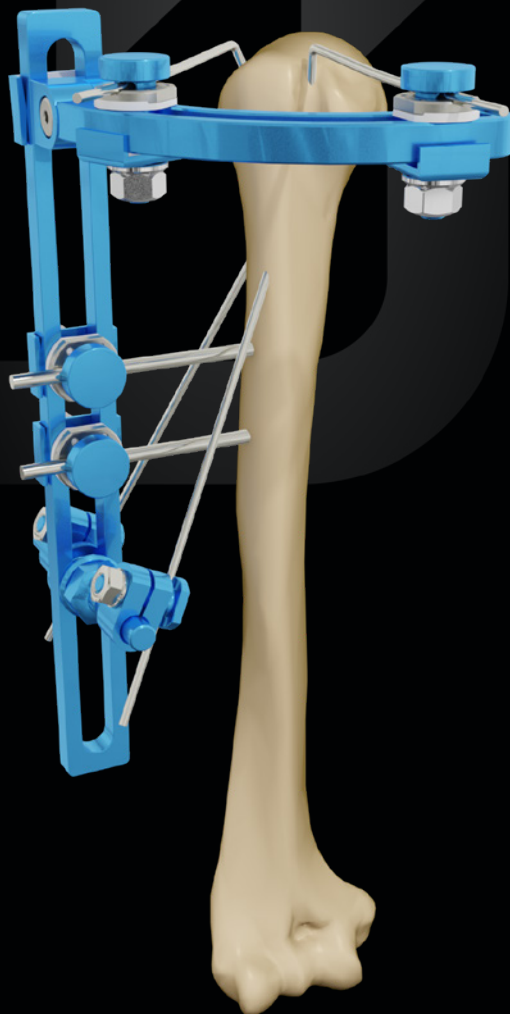
FEP SHOULDER

PROXIMAL HUMERUS EXTERNAL FIXATOR

Minimally Invasive

Stable

Sterile



Indications

Scan the QR-Code to get more information about the device



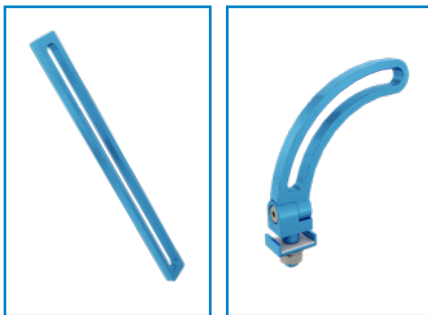
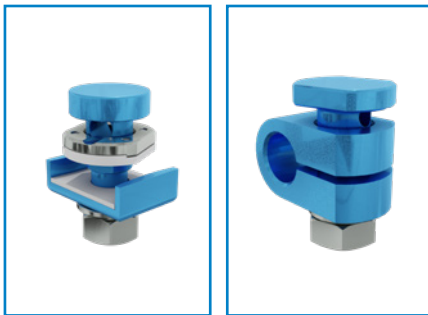
Proximal humeral fractures

FEATURES

CLINICAL ADVANTAGES

Minimally invasive	Closed reduction using screws and wires Reduced soft tissue dissection and blood loss
Stable	The use of threaded wires guarantees a better fracture reduction and a three-dimensional stability
Sterile	Ready for use
Versatile	Modular and adaptable on all three planes Reduced OR time and early mobilization

Kit FEP Shoulder



Description

Qty

FEP single clamp	4
Single clamp for support	2
Body of the fixator L 220 mm	1
Arch 90° Ø 120 mm	1
Support	1
Self drilling cortical screw Ø 4.0 mm L 140 mm	2
Threaded wire Ø 2.5 mm L 300 mm thread L 70 mm	2
K wire Ø 2.5 mm L 300 mm lancet tip	2



HEADQUARTERS

Via P. Gobetti, 56r - 16145 Genova
Tel. +39 010 30801 - Fax +39 010 3080210
www.mikai.it - servizio.clienti@mikai.it

MANUFACTURING FACILITY

Via Canestrello, 2 - 36050 Monteviale (VI)
Tel. +39 0444 950100 - Fax +39 0444 950133
www.mikai.it - servizio.clienti@mikai.it